

Project 08 Fan



1. Description

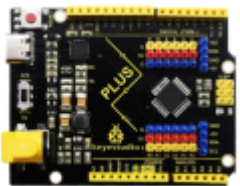
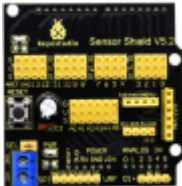



L9110 fan module adopts L9110 motor control chip to control the rotation direction and speed of the motor.

Moreover, this module is an important part of fire robot, which can put out the flame within 20cm distance.

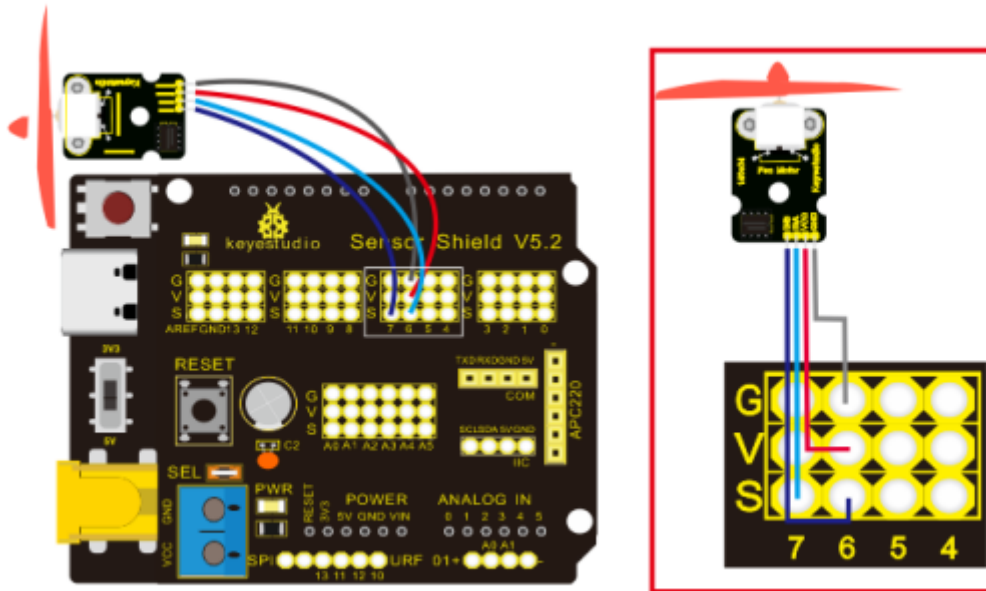
2. Parameters

- Working voltage: 5V
- Working current: 0.8A
- Support TTL / CMOS output level
- Control and drive integrate in IC
- High pressure protection for pins
- Working temperature: 0-80°

3. Needed Components

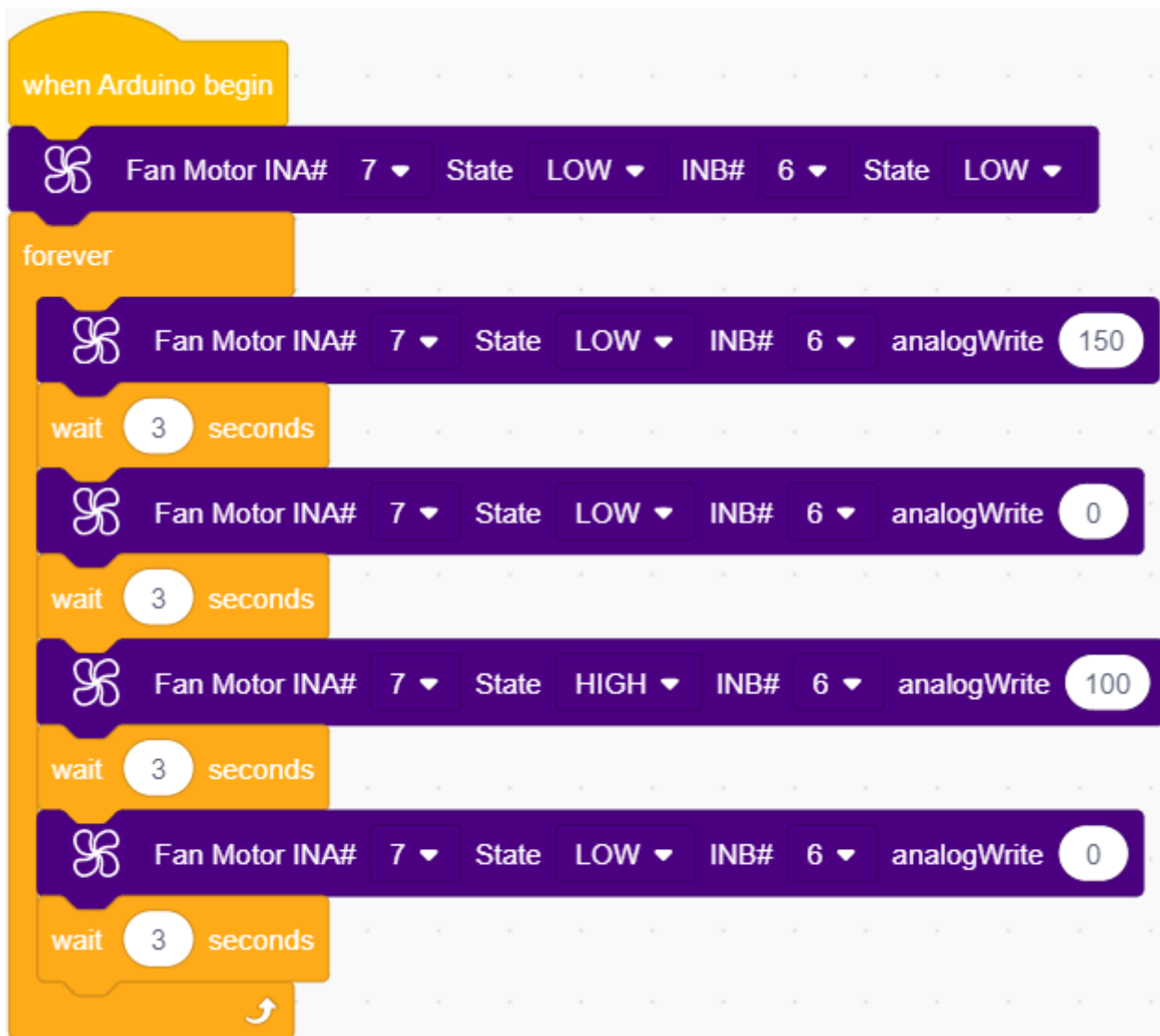
PLUS control board*1	Expansion board*1	Fan *1	USB cable*1	4pin F-F Dupont wire*1
				

4. Wiring Diagram



On the expansion board, the GND, VCC, INA, and INB pins of the fan module are respectively connected to G, V, 7, 6.

5. Test Code



6. Test Result

Upload test code, hook up the components according to connection diagram, and dial the DIP switch to right side and power on.

The fan rotates clockwise and counterclockwise for 3000ms alternately with an interval of stop for 1000ms.

